

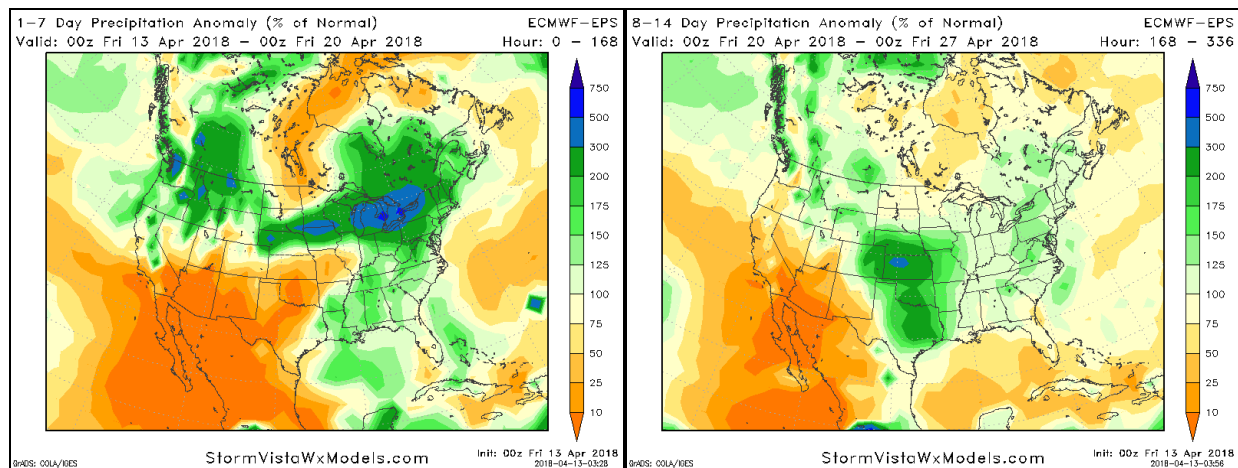
## Climate Impact Company Early AG Wire

*Issued MON-FRI 0900 GMT*

**Friday April 13, 2018**

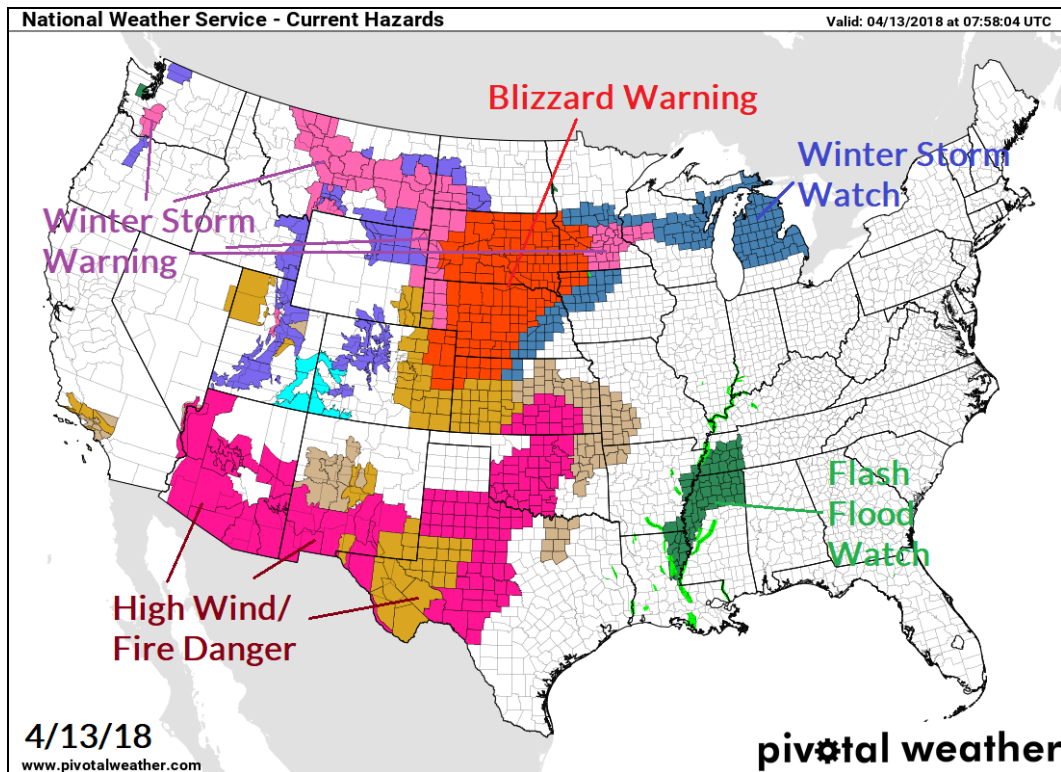
**Today's Highlight: Wetter trend for days 8-14 in the southwest Plains holds.**

**Great Plains precipitation:** Heavy precipitation, mostly snow stretches across the North-Central to Midwest U.S. the next week or so (*Fig. 1*) while the drought zone in the south-central Plains to Southwest U.S. stays dry. However, a wetter 8-14 day forecast centered on the drought area in the 8-14 day period initiated yesterday is heavier and agreed upon by most models (*Fig. 2*).

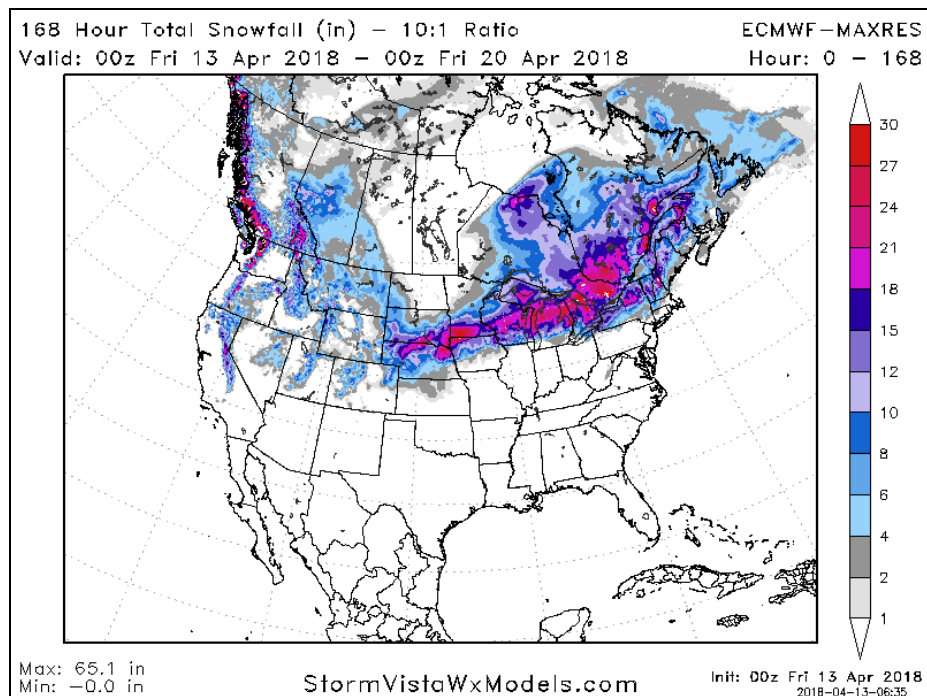


**Fig. 1-2: The day 1-7/day 8-14 % of normal precipitation forecast for the U.S. using the ECM ensemble.**

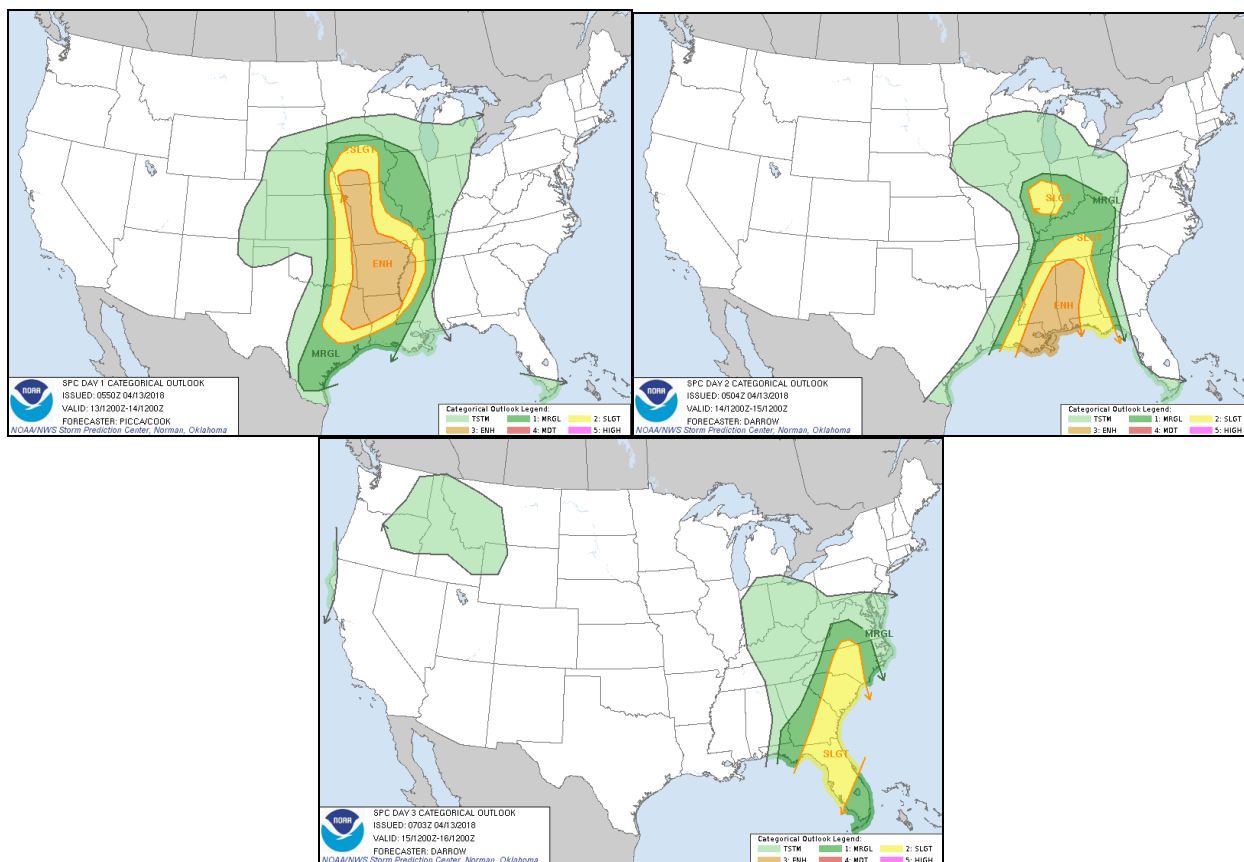
**Current Great Plains warnings:** A plethora of hazards affects the Great Plains now including a Blizzard Warning for the west/north-central Great Plains (*Fig. 3*). Winter Storm Watch extends eastward to Michigan and this area is likely to shift into a Blizzard Warning this weekend. High wind dries soils across Kansas, Oklahoma and western Texas. Severe storms will cause flash flooding in the Mid-South. The ECMWF 7-day snowfall forecast indicates amount ranging from 20-25 in. is common Nebraska to Michigan (*Fig. 4*).



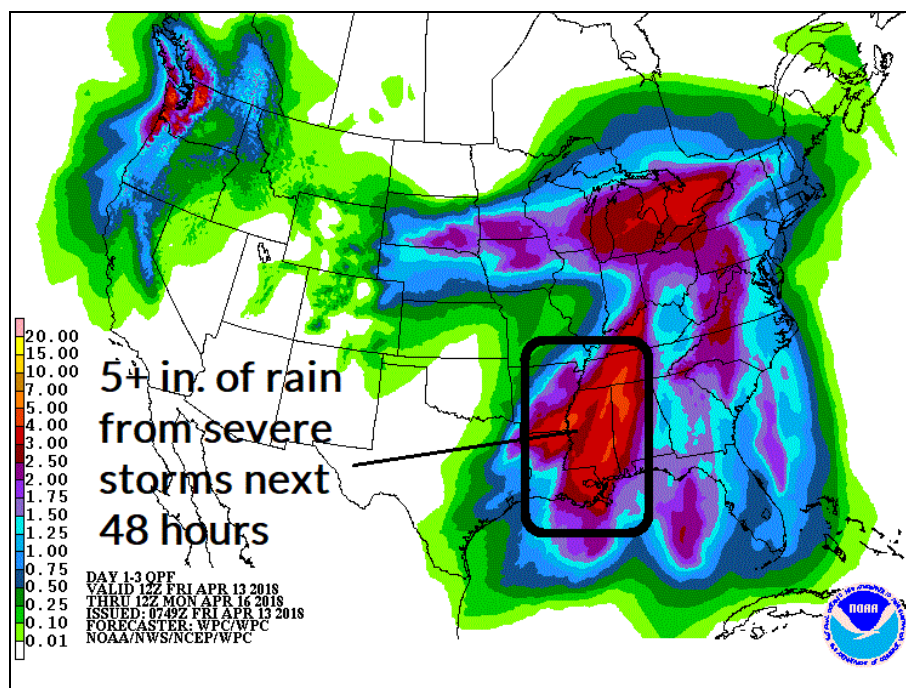
*Fig. 2: NOAA/SPC indicates a severe weather outbreak in the Mid-South U.S. tomorrow featuring tornadoes centered on Arkansas.*



*Fig. 3: ECMWF 7-day snowfall forecast amount for the U.S.*

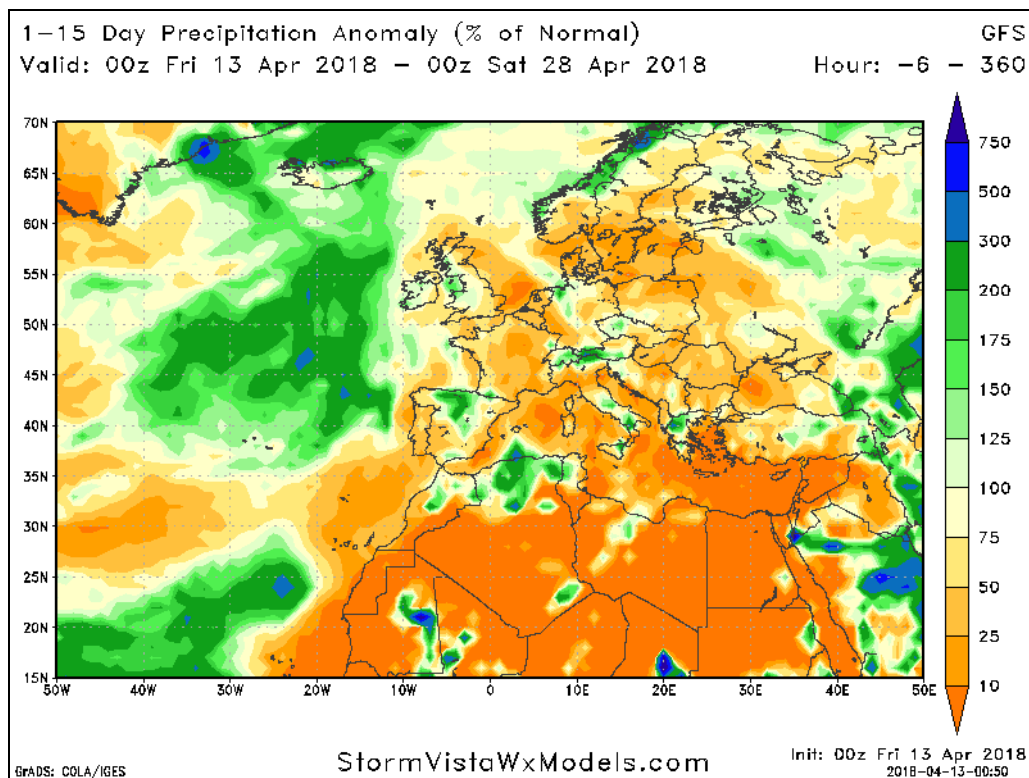


*Fig. 4-6: Severe weather risk zones the next 3 days.*

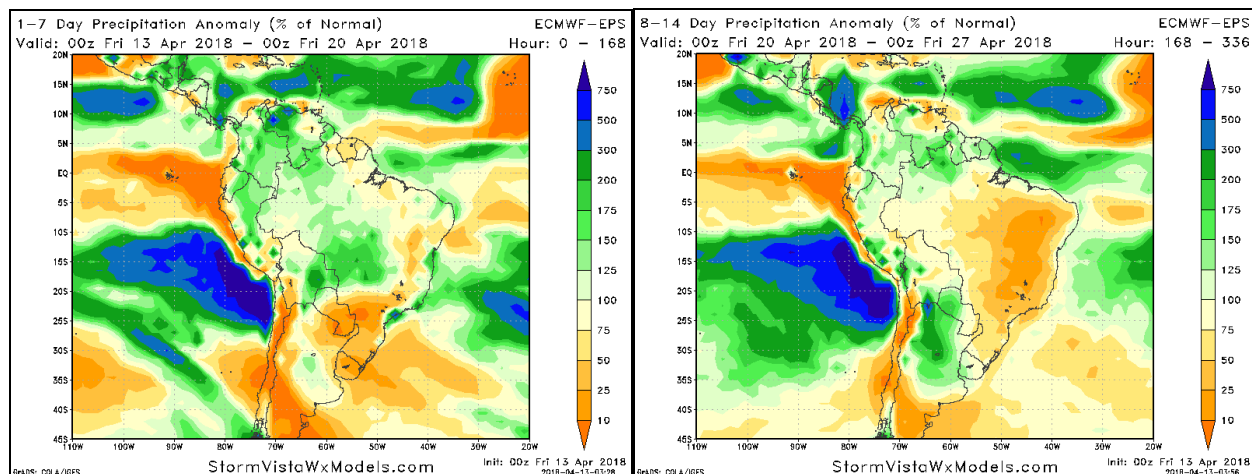


*Fig. 7: 5+ in. of rain caused by severe storms the next 2 days.*

**Elsewhere:** The 15-day forecast across Europe trends drier and much of the region is without any significant precipitation into late month (*Fig. 8*). In Argentina dryness fades after 5 days when a cold front brings showers days 6-7 (*Fig. 9*). The 8-14 day period trends wetter in Argentina and drier in Brazil (*Fig. 10*).



*Fig. 8: Widening dry climate the next 15 days across Europe.*



*Fig. 9-10: Dry across Argentina the next 5 days then turning wet days 6-7 and especially days 8-14 according to the ECM ensemble.*